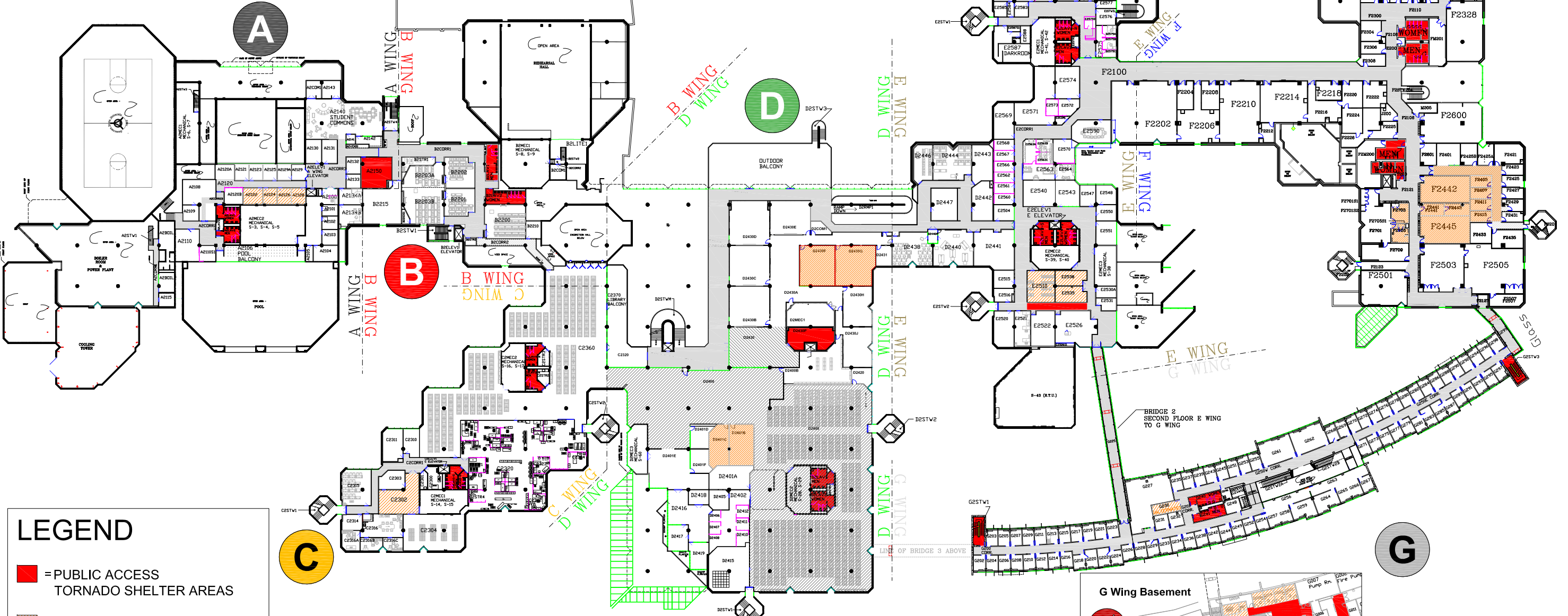


Tornado warnings will be issued by the Department of Public Safety (DPS) via broadcast through the IP phone system, hallway speakers, and the fire alarm public address system.

When a warning is issued:

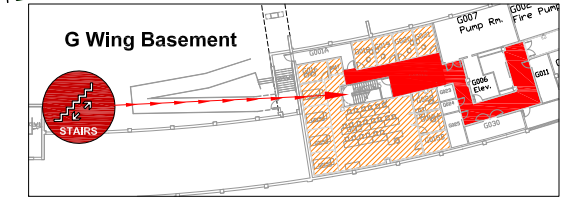
- ✓ If outside, get indoors as soon as possible.
- ✓ Go to the lowest floor of the building and to a Tornado Shelter area. Areas are designated with a sign, as illustrated to the right. These spaces have the most walls possible between you and the outside.
- ✓ On the second and third floors, Tornado Shelter Areas include:
  - Washrooms
  - East and West Stairwells in G Wing
  - Other 'Concrete Core' Areas

Individuals should remain in the Tornado Shelters until an 'all clear' signal is given via the IP phone and fire alarm P.A. system. Shelters not reached by either of these systems will be visited by members of the Department of Public Safety to signify an 'all clear.'

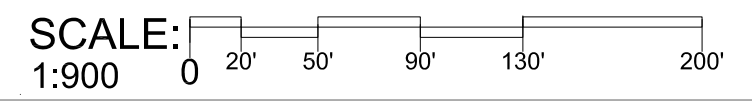


**LEGEND**

- = PUBLIC ACCESS TORNADO SHELTER AREAS
- = INTEROFFICE / LIMITED ACCESS TORNADO SHELTER AREAS



**DRAWING TITLE:** Main Building Tornado Shelter Plan  
**PROJECT NAME:** Emergency Response  
**DATE:** 10 October 2016  
**DRAWN BY:** L. Schultz    **CHECKED BY:**



Revision History:

1)	25 June 2009
2)	07 April 2010
3)	03 May 2012
4)	30 September 2015
5)	18 March 2016
5)	10 October 2016

# Second Floor Tornado Shelter